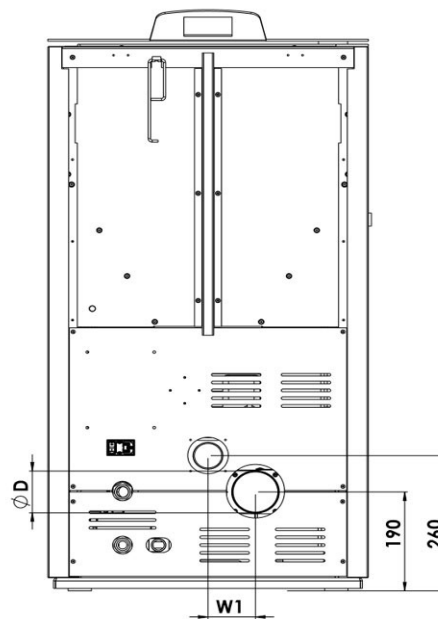
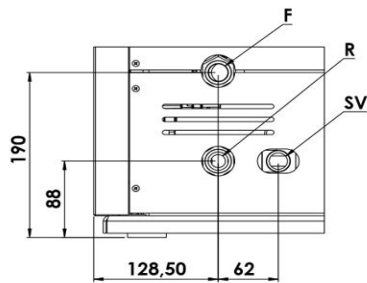


Model		HYDRA			
Types		12	16	24	
Thermal power (min/max)	kW	5 / 12	6,7 / 16	10 / 24	
Thermal power of fluid (water) (min/max)	kW	4,1 / 9,7	5,4 / 12,9	8,1 / 19,4	
Hourly fuel consumption (min/max)	kg/h	1,1 / 2,6	1,5 / 3,6	2,3 / 5,4	
Efficiency	%	89	90	90	
CO content (with 13% O2) min/max	%	0,02 / 0,0025	0,02 / 0,0025	0,02 / 0,003	
Flue temperature (min/max)	°C	125 / 180	110 / 170	85 / 140	
Minimum draught	Pa	10			
Maximum power rating	W	400			
Power rating at work	W	160			
Supply voltage and frequency	V/Hz	230/50			
Fuel tank capacity	kg	27	32	36	
Expansion tank capacity	lt	7			
Maximum working pressure	bar	3			
Flow / Return (F / R)	R	3/4"			
Safety valve (SV)	R	3/4"			
External dimensions					
	H	mm	990	1060	1120
	W	mm	560		600
	W1	mm	80		110
	L	mm	540		610
	D	mm	Ø 80		
	Fresh air intake diameter	mm	Ø 50		



H1	H2
260	190